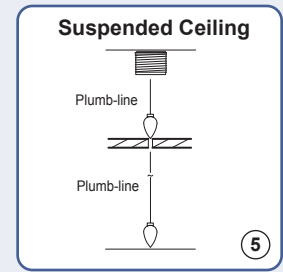
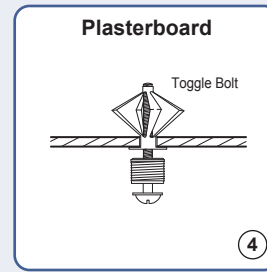
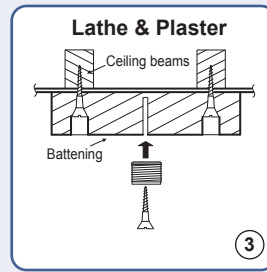
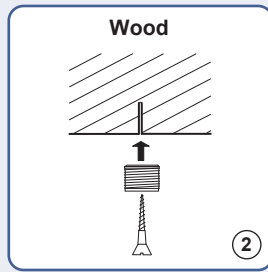
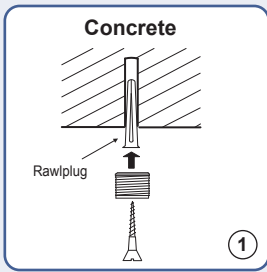


6mm Rod Display Systems - INSTALLATION GUIDELINES



Top to Bottom (RAS) - Rod Installation

IMPORTANT: It is essential to check that the top ceiling fixings are strong enough to take the weight of the items being displayed, whilst allowing for the tension in the rods.

Isolators must be used where power is required through the rods (lighting etc.) and fixings are into metal or conductive materials. Remember to replace the top brass fitting with the plastic **PR01/I** isolator and add bottom isolator **SP/IS** to bottom fitting.

- 1) Fix fitting (A) to ceiling:
 - for wooden ceilings use a wood screw.
 - for cavity ceilings use a spring toggle bolt.
 - for solid ceilings use a rawlplug and screw.
- 2) Screw part (B) into part (A). This has a left hand thread.
- 3) Using a plumb-line, plumb down from (A) and fix floor fitting (F) to floor, using appropriate type of fixing.
- 4) Screw rod into top fitting (A) using a left hand thread and add as many additional rods as required.
- 5) Cut bottom rod in line with the decorative line around floor fitting (F).
- 6) Slide tensioner (C), spring (D) and rod grip (E) onto the rod. Tighten grip (E) to the end of the rod with allen key provided.
- 7) Adjust the tension of the rod by screwing tensioner (C) into floor fitting (F). See (G) below.

N.B. It is important to check the strength of the top fixing. No responsibility will be taken for incorrect fixing. This responsibility rests with the installer.

If using lighting on rods, we recommend that you use isolators (see illustration) at the top and bottom.

Rods are not supplied with fixing screws.

